

J. Scott VanEpps

BIO I NTERFACES
INSTITUTE

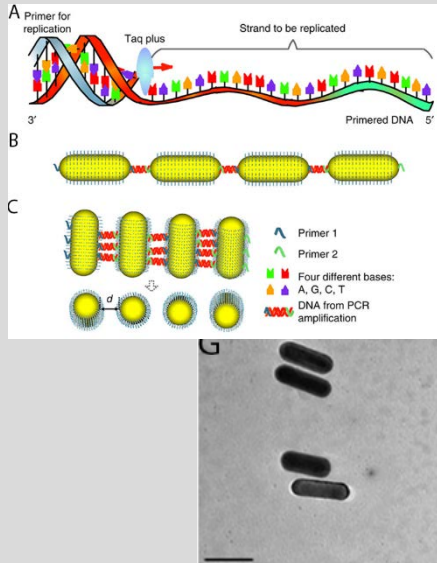


MCIRCC
CENTER FOR INTEGRATIVE
RESEARCH IN CRITICAL CARE



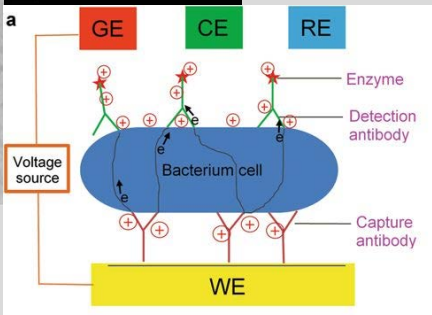
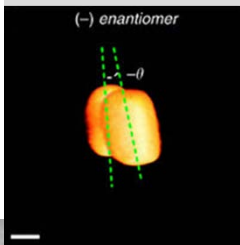
Translational Microbiology

Diagnostics

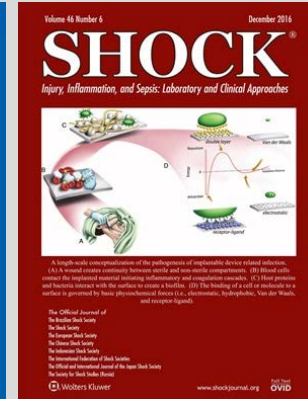
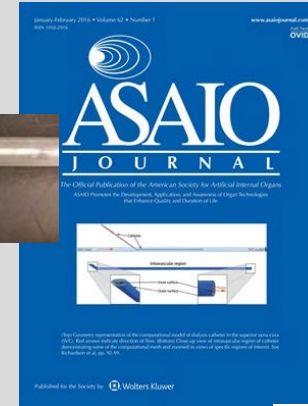


Nanotechnology
Quantum tunneling

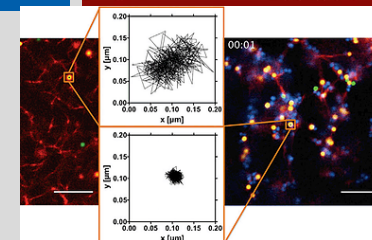
Sepsis
Bacteremia
Pneumonia



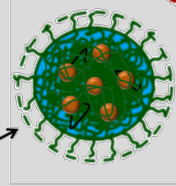
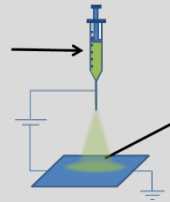
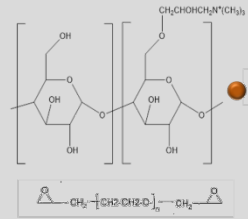
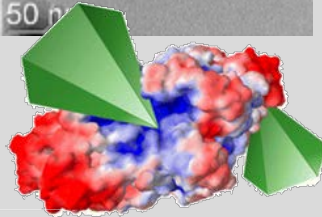
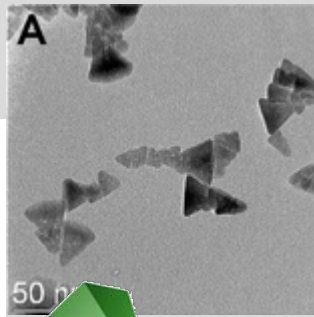
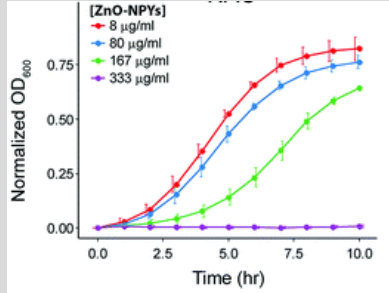
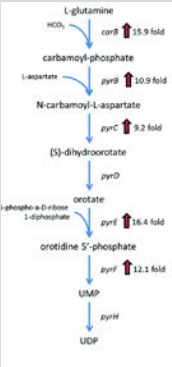
Medical device infection



Biofilms
In situ therapy
In vivo models
Bacterial adhesion
Computational modeling
Host-pathogen interaction

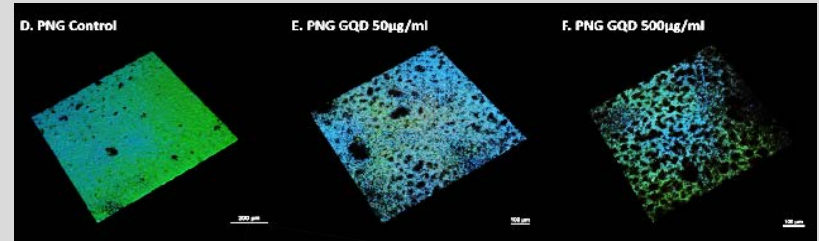
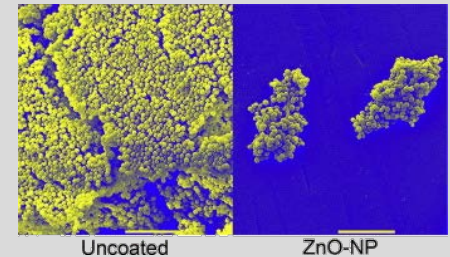
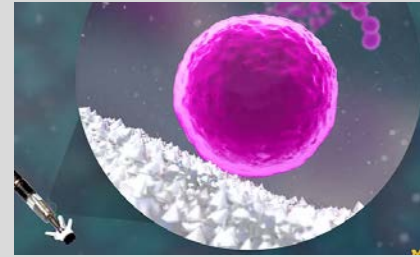


Nanobiotics

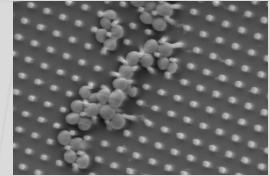
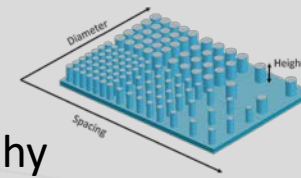


Omics
Copper
Zinc oxide
Enzyme inhibition
Molecular mechanisms

Antibiofilm nanomaterials



Coatings
Nanoparticles
Layer-by-layer
Nanotopography



Funding sources: NIH, DARPA, Joint Institute, BlueSky initiative, ATS, SAEM

Learn more:

Lab website: <http://vanepplab.um.com/>
 MCIRCC website: <https://mcircc.umich.edu/>
 Email: jvane@med.umich.edu

Location:
 NCRC, B026-328N
 2800 Plymouth Rd.
 Ann Arbor, MI 48109
 734-763-9388

